



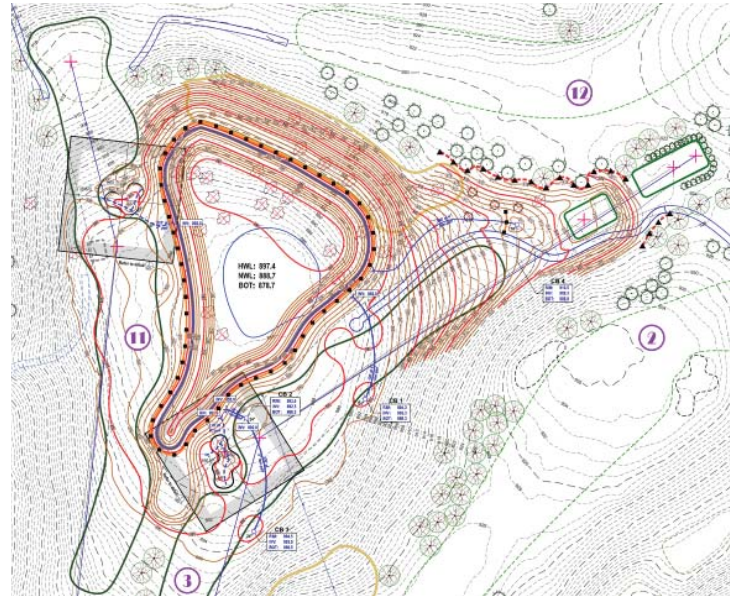
1431 North Lexington Parkway
St. Paul, Minnesota 55103

STORMWATER MANAGEMENT PROJECT



Project Profile

The City of St. Paul owns and operates four golf courses. Como Golf Course is an eighteen hole public golf course situated on the shores of Lake Como. With decades of dense urban development, increased runoff and flooding had become problematic. In 2006, the Capital River Watershed District partnered with the City of St. Paul to explore the feasibility of locating a large stormwater pond on Como Golf Course. Herfort Norby was retained to assist in designing the pond and to insure that playability and public safety were maintained.



References

Mr. Steve Dinger
Golf Course Superintendent
Como Park Golf Course
St. Paul, MN
(651)248-7423
steve.dinger@ci.stpaul.mn.us



Responsibilities

Herfort Norby's responsibilities included working with the City of Minneapolis and the Capital River Watershed District to locate and design the stormwater pond and changes to the existing golf holes. In addition, Herfort Norby prepared detailed construction and bid documents, assisted with the public bidding, contractor selection and construction observation. The final solution involved construction of a large 1.25 acre surface storage pond and the reconstruction of holes 3, 11 and 12 as well as 1.5 acres of native prairie restoration.



Our mission is to protect,
manage and improve the
water resources of
Capitol Region Watershed District